

THE REPORTER



Psalm 23 "The Lord is my shepherd, I shall not want"

Grace and peace to you from God the Father, and our Lord Jesus Christ. Amen.

Our theme for Lent this year "The Lord is my Shepherd". We are using the 23rd Psalm as our theme text, but did you know that you can find shepherd language throughout the scripture. From the Old Testament to the New Testament, we hear about the shepherds, both good shepherds, and bad shepherds.

Each week we will hear about the shepherds as we read from the prophets and gospels and psalms. All of this leads to the one true Good Shepherd, Jesus Christ. The one who protects his sheep, the one who guides us, cares for us, seeks us out when we are lost, and rejoices when we are found. The one Good Shepherd to lays down his life for us, you and me, that we might be set free from sin and death, and carry with us the promise of resurrection and new life.

Once again, we will be partnering with our neighboring congregations for a round robin so you will get to listen to a variety of preachers from around the area. Worship will be held between West Nidaros and Benton and Willow Creek. We will have a time for supper from 5:30-6:30 p.m. with worship from 6:30 to 7:00 p.m.

God's blessings to you all.

In Christ,
Pr. Jared Rakness

A graphic with a background of a green field with sheep. The text reads: "THE LORD IS MY SHEPHERD" LENT 2024. February 21 - West Nidaros, February 28 - Benton, March 6 - Willow Creek, March 13 - West Nidaros, March 20 - Benton. Meal at 5:30 p.m., Worship at 6:30 p.m.

"THE LORD IS MY SHEPHERD"
LENT 2024
February 21 - West Nidaros
February 28 - Benton
March 6 - Willow Creek
March 13 - West Nidaros
March 20 - Benton
Meal at 5:30 p.m.
Worship at 6:30 p.m.

A graphic with a black background and a white cross. The text reads: Ash Wednesday Worship. WEDNESDAY, FEBRUARY 14 | 6:30 P.M. WEST NIDAROS LUTHERAN CHURCH.

Ash Wednesday
Worship
WEDNESDAY, FEBRUARY 14 | 6:30 P.M.
WEST NIDAROS LUTHERAN CHURCH

Generosity & Missions

December Operating Fund

Actual Monthly Income: \$51,523.45
Actual Monthly Expenses: \$36,760.77
Actual YTD Income: \$419,193.34
Actual YTD Expenses: \$416,611.20

80+ Birthday
4 - Bob Carlson



Baltic Food Bank Wish List

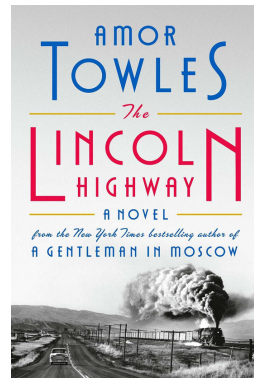
Coffee, Juice, Canned chicken, Tuna, Flour, Cookie Mixes, Cake Mixes, Syrup, Salad Dressing, Knorr Sides, Pop Tarts, Granola Bars, Snacks, Sugar, Oil, Peanut Butter, Jelly, Ketchup, Mustard, BBQ Sauce, Saltine Crackers, Snack Crackers, Spaghetti Sauce, Laundry Soap, Dish Soap, Personal Hygiene Items

Monetary Donations are welcome – Please mail to:
PO Box 244, Baltic, SD 57003

The Baltic Food Bank is open to all residents of Baltic and Crooks. It is open the second Wednesday of every month from 6:30 – 7:30 p.m., as well as the fourth Saturday of every month from 10:30-11:30 a.m., as well as by emergency appointment by calling 605-529-5032.

Book Club

February's book selection is "The Lincoln Highway" by Amor Towles. Spanning just ten days and told from multiple points of view, Towles's novel will satisfy fans of his multi-layered literary styling while providing them an array of new and richly imagined settings, characters, and themes.



We will plan to meet Monday, February 26 at 4 p.m. to discuss the book. Pick up your copy in the library, north wall. All are welcome!

West Nidaros Lutheran Church

One Worship

Souper Bowl Sunday

February 11, 2024
9:30 a.m. | Family Life Center

Morning will include:
Music from "Short Notice"
SS student sing
Soup Cook-Off & potluck

Don't forget to wear your favorite jersey or team apparel!

Lutheran World Relief Kits

The women at TPSY are putting together health kits to send to Lutheran World Relief. If you would like to assist us, we are collecting new bath towels, regular size bar soap, and single packaged toothbrushes. These items can be brought to the basement quilting tables or give them to Sharon Hoekman or Jolene Wehde. Thank you in advance for any donations!

Women of West Nidaros Dates

- 6 - TPSY Projects
- 13 - TPSY Brunch & Projects
- 20- TPSY Projects
- 27 - TPSY Projects
- 28 - Bible Study @ 1:30 p.m.



February Happenings

- 4 - Sunday School, 3 year old/parent. Please bring in your food donations for the Baltic Food Pantry and Feeding South Dakota to Sunday school!
- 7 - iFaith, Confirmation, High school Ministry
- 11 - Sunday school students sing at 9:30 worship service
- 14 - Ash Wednesday - No Youth programming
- 18 - NO Sunday school
- 21 - Lent meal & worship @West Nidaros
- 25 - Sunday school, 5th Grade Milestone The Apostle's Creed at 10:30 worship
- 28 - Lent worship @Benton

FEBRUARY 2024

SUN	MON	TUE	WED	THU	FRI	SAT
<p> WEST NIDAROS LUTHERAN CHURCH</p>				<p>1 9am-2:30pm Office Open 9-11:30am Growing Place 3pm Stretch & Pray 5pm Exercise Class 5:45pm Pickle Ball</p>	<p>2 Office Closed</p>	<p>3</p>
<p>4 Communion 8:30am Worship 9:35am SS/Bible Study 10:30am Worship 2:00pm Exercise Class 3:00pm Pickle Ball</p>	<p>5 9am-4pm Office Open 6pm BSA Troop 57 6:30pm Bible Study</p>	<p>6 9am-4pm Office Open 9-11:30am Growing Place 9am TPSY 11:30am Stretch & Pray 5:45pm Taekwondo</p>	<p>7 9am-4pm Office Open 4pm iFaith 6pm Confirmation 7pm High School Ministry 7pm Ministry Team Meeting</p>	<p>8 9am-2:30pm Office Open 9-11:30am Growing Place 3pm Stretch & Pray 5pm Exercise Class 5:45pm Pickle Ball</p>	<p>9 Office Closed</p>	<p>10</p>
<p>11 Communion Souper Bowl Sunday - ONE Worship 9:30 am Worship - FLC 10:30 am Potluck 2:00pm Exercise Class 3:00pm Pickle Ball</p>	<p>12 9am-4pm Office Open 6pm BSA Troop 57 6:30pm Bible Study</p>	<p>13 9am-4pm Office Open 9-11:30am Growing Place 9am TPSY Brunch 11:30am Stretch & Pray 5:45pm Taekwondo</p>	<p>14 Ash Wednesday 9am-4pm Office Open 6:30pm Ash Wednesday Worship</p>	<p>15 9am-2:30pm Office Open 9-11:30am Growing Place 3pm Stretch & Pray 5pm Exercise Class 5:45pm Pickle Ball</p>	<p>16 Office Closed</p>	<p>17</p>
<p>18 No Sunday School 8:30am Worship - Renner Baptism 9:35am Bible Study 10:30am Worship 2:00pm Exercise Class 3:00pm Pickle Ball</p>	<p>19 9am-4pm Office Open 6pm BSA Troop 57 6:30pm Bible Study</p>	<p>20 9am-4pm Office Open 9-11:30am Growing Place 9am TPSY 11:30am Stretch & Pray 5:45pm Taekwondo</p>	<p>21 Newsletter Deadline 9am-4pm Office Open 5:30pm Lent Meal 6:30pm Lent Worship @ WN</p>	<p>22 9am-2:30pm Office Open 9-11:30am Growing Place 3pm Stretch & Pray 5pm Exercise Class 5:45pm Pickle Ball</p>	<p>23 Office Closed</p>	<p>24</p>
<p>25 8:30am Worship 9:35am SS/Bible Study 10:30am Worship 11:45am Council Meeting 2:00pm Exercise Class 3:00pm Pickle Ball</p>	<p>26 9am-4pm Office Open 4pm Book Club 6pm BSA Troop 57 6:30pm Bible Study</p>	<p>27 9am-4pm Office Open 9-11:30am Growing Place 9am TPSY 10:30am Newsletter Assembly 11:30am Stretch & Pray 5:45pm Taekwondo</p>	<p>28 9am-4pm Office Open 1:30pm WELCA Bible Study 6:30pm Lent Worship @Benton</p>	<p>29</p>		

Connect with us!

Website: westnidaros.org

Facebook: @WestNidarosLutheranChurch



Instagram @westnidaros



Worship:

8:30 a.m. & 10:30 a.m.

Livestream at 10:30 a.m.



Office Hours:

Monday-Wednesday: 9 a.m. - 4 p.m.

Thursday: 9 a.m. - 2:30 p.m.

Fridays: Closed



Sharing Christ's Love with All!

WEST NIDAROS STAFF

PASTOR JARED RAKNESS

(605) 543-5215

JARED@WESTNIDAROS.ORG

DIRECTOR OF FAITH FORMATION

JESSI RAKNESS (605) 413-8412

JESSIRAKNESS@GMAIL.COM

OFFICE ADMINISTRATOR & YOUTH COORDINATOR

ELISE HASCHE

ELISE@WESTNIDAROS.ORG

DIRECTOR OF WORSHIP & MUSIC

KRISTI STELTER

KRISTI@WESTNIDAROS.ORG

PROPERTY MANAGER

CHRIS LANGLOSS

CHRIS@WESTNIDAROS.ORG

CHURCH OFFICE

(605) 543-5215

OFFICE@WESTNIDAROS.ORG



25403 471st Ave
Crooks, SD 57020

Return Service Requested

Non-Profit
Organization
U.S. Postage
PAID
Permit #1
Crooks, SD

